

# RAYMOND, NH | NE CORNER OF FREETOWN RD & ESSEX DRIVE

**NEW RETAIL DEVELOPMENT -  
1,700 SF AVAILABLE**



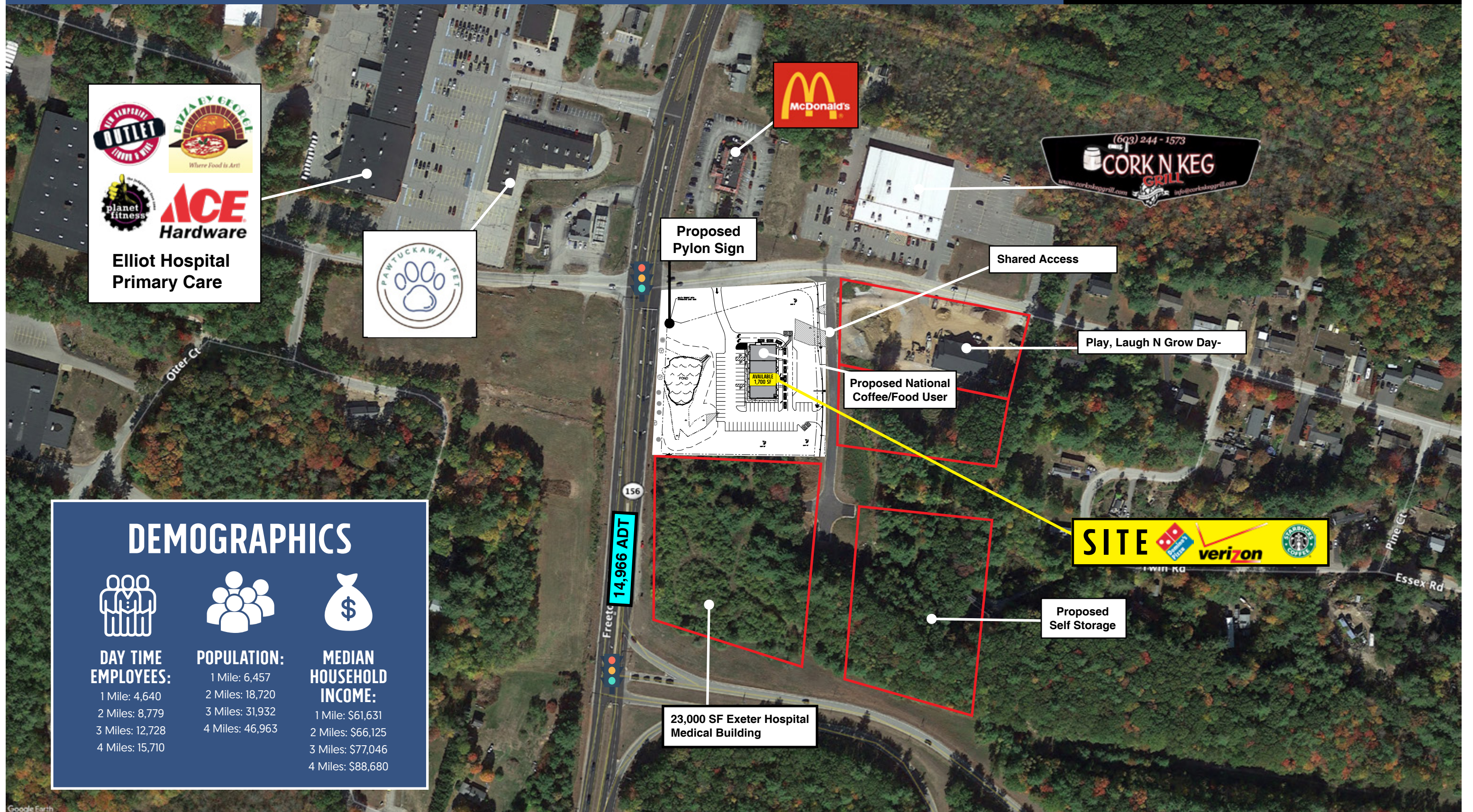
### PROPERTY INFORMATION

- New Retail Development 1,700 SF Available.
- Co-Tenancy with national food/coffee retailer, Domino's and Verizon.
- Prime location at the signalized main intersection in Raymond, just off Highway Route 101.
- Site is part of a larger mixed use development which will include a 20,000 SF + medical building, day care, and other retail.
- Surrounded by national retailers including: Hannaford Supermarket, Planet Fitness, Rite Aid, Walgreens, Dunkin Donuts, and McDonald's



# RAYMOND, NH | NE CORNER OF FREETOWN RD & ESSEX DRIVE

**NEW RETAIL DEVELOPMENT -  
1,700 SF AVAILABLE**



**Elliot Hospital  
Primary Care**



## DEMOGRAPHICS

DAY TIME EMPLOYEES:	POPULATION:	MEDIAN HOUSEHOLD INCOME:
1 Mile: 4,640	1 Mile: 6,457	1 Mile: \$61,631
2 Miles: 8,779	2 Miles: 18,720	2 Miles: \$66,125
3 Miles: 12,728	3 Miles: 31,932	3 Miles: \$77,046
4 Miles: 15,710	4 Miles: 46,963	4 Miles: \$88,680

23,000 SF Exeter Hospital Medical Building

14,966 ADT

**SITE**



# RAYMOND, NH | NE CORNER OF FREETOWN RD & ESSEX DRIVE

**NEW RETAIL DEVELOPMENT -  
1,700 SF AVAILABLE**

